

*"QUALITY PUMPS SINCE 1939"*

Product information presented here reflects conditions at time of publication. Consult factory regarding discrepancies or inconsistencies.

**JOELMER  
PUMP CO.**

\$332



SECTION: 2.30.010

FM0773

0394

Supersedes

1093

MAIL TO: P.O. BOX 16347 • Louisville, KY 40256-0347  
SHIP TO: 3280 Old Millers Lane • Louisville, KY 40216  
(502) 778-2731 • 1 (800) 928-PUMP • FAX (502) 774-3624

## COMPARE THESE FEATURES:

- Non-clogging Vortex Impeller Design.
- Float operated, submersible (NEMA 6) 2 pole switch.
- Durable cast iron construction. Cast iron pump housing, and impeller.
- Non-porous, highly resistant, nickel plated steel motor housing.
- Stainless steel screws, bolts, handle, guard, arm and seal assembly.
- UL-listed 3-wire cord and plug.  
15 ft. cord standard for automatic.  
15 ft. cord standard for non-automatic.
- Thermal overload protection.
- Oil filled PSC motor - hermetically sealed.
- Engineered plastic switch case and base.
- ½ H.P. 115V, 1Ph., 60 cycle, 1725 RPM.
- Carbon and ceramic shaft seal.
- Self aligning bearings running in oil.
- Passes 2-inch spherical solids.
- 2" NPT Discharge.
- On point - 11½"
- Off point - 4¼"
- Major width 13"
- Height 14"

## SIMPLEX AND DUPLEX SYSTEMS AVAILABLE

**JOELMER  
PUMP CO.**

MAIL TO: P.O. BOX 16347  
Louisville, KY 40256-0347  
SHIP TO: 3280 Old Millers Lane  
Louisville, KY 40216  
(502) 778-2731 • 1 (800) 928-PUMP  
FAX (502) 774-3624

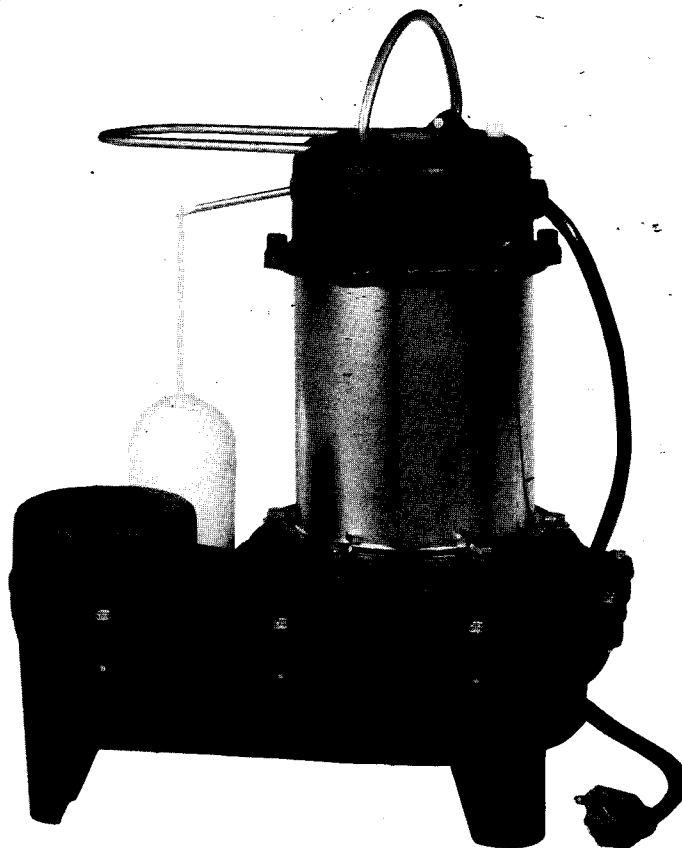
Manufacturers of . . .

*"QUALITY PUMPS SINCE 1939"*



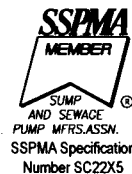
## "262" SERIES "WASTEMATE"

SUBMERSIBLE  
SEWAGE/\*EFFLUENT  
OR DEWATERING PUMP  
2" NPT DISCHARGE

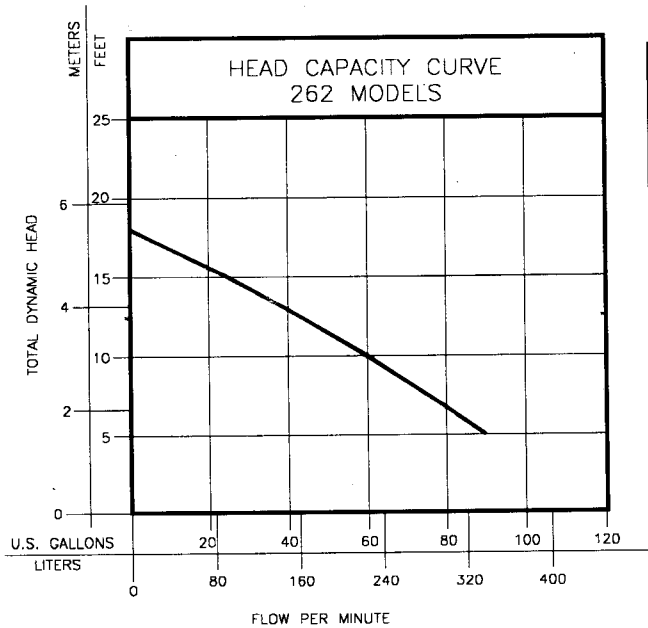


### MODELS AVAILABLE

- Automatic
- Non-Automatic (for variable level systems)
- 2" NPT Discharge
- ½ H.P., 1PH., 115V
- Passes 2" Solids (Sphere)
- BN262 available packaged with Piggyback variable level float switch.

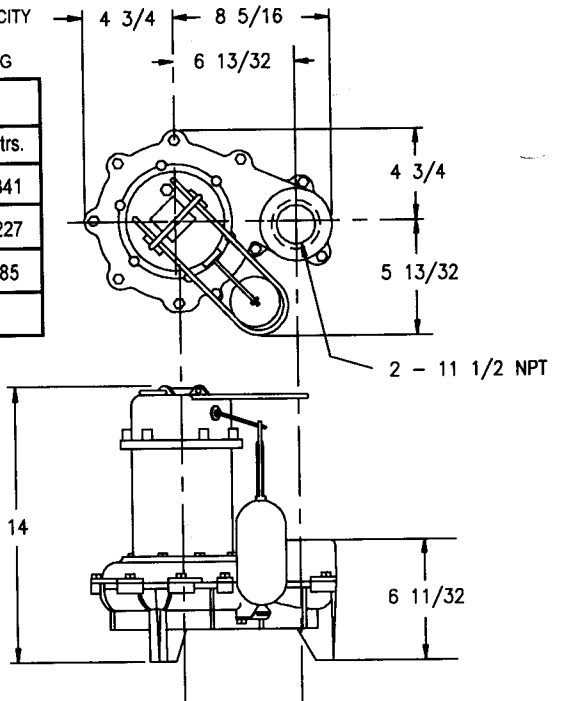


\*May be used in those states where codes do not restrict solids size in effluent systems.



TOTAL DYNAMIC HEAD/CAPACITY  
PER MINUTE  
SEWAGE AND DEWATERING

262 MODELS			
Ft.	Meters	Gal.	Ltrs.
5	1.52	90	341
10	3.05	60	227
15	4.57	22.5	85
Lock Valve:			18 ft.



### CONSULT FACTORY FOR SPECIAL APPLICATIONS

- Electrical alternators for duplex systems available with variable level float switches.
- Minimum recommended basin size  
Simplex-18"x36"  
Duplex-30"x30"
- Standard Automatic - Weight 24 lbs. 1/2 H.P.

- High water alarms available.
- Mechanical alternators available for duplex systems.  
**Caution:** Maximum temperature of sewage or dewatering must be limited to 130° F. (54° C.)  
For over 130° F. (54° C.) special quotation required.

262 MODELS				CONTROL SELECTION		
Model	Volts	Ph	Mode	Amps	Simplex	Duplex
M262	115	1	Auto	9.4	1 or 1 & 7	—
N262	115	1	Non	9.4	2 or 2 & 6	3 or 4 & 5

### SELECTION GUIDE

1. Integral float operated 2 pole mechanical switch, no external control required.
2. Single piggyback variable level float switch, or double piggyback variable level float switch. Refer to FM0477.
3. Mechanical alternator "M-Pak" 10-0072 or 10-0075.
4. See FM0712 for correct model of electrical alternator "E-Pak."
5. Control switch 10-0225 used as a control activator specify duplex (3) or (4) float system.
6. Four hole "J-Pak", junction box, for watertight connection or wired-in simplex or 2 pump operation, 10-0002.
7. Two hole "J-Pak", for watertight connection or splice, 10-0003.

For information on additional Zoeller products refer to catalog on Piggyback Variable Level Float Switches, FM0477; Electrical Alternator, FM0486; Mechanical Alternator, FM0495; Alarm Package, FM0513; and Sump/Sewage Basins, FM0487, and Simplex Control Box, FM0732.

CAUTION  
All installation of controls, protection devices and wiring should be done by a licensed qualified electrician. All electrical and safety codes should be followed including the most recent National Electric Code (NEC) and the Occupational Safety and Health Act (OSHA).

### RESERVED POWERED DESIGN

For unusual conditions a reserve safety factor is engineered into the design of every Zoeller pump.



**ZOELLER**  
PUMP CO.

MAIL TO: P.O. BOX 16347  
Louisville, KY 40256-0347  
SHIP TO: 3280 Old Millers Lane  
Louisville, KY 40216  
(502) 778-2731 • 1 (800) 928-PUMP  
FAX (502) 774-3624

Manufacturers of . . .

"QUALITY PUMPS SINCE 1939"