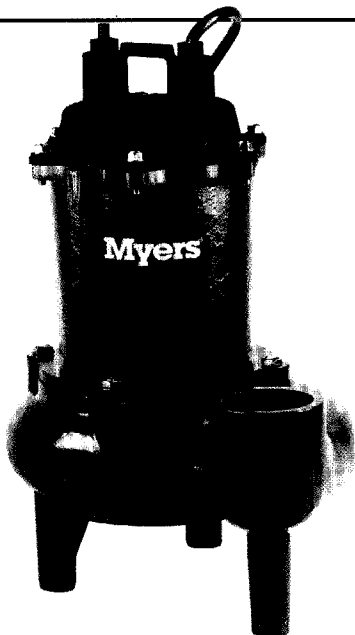


MW50 SERIES

½ Horsepower
2" Solids Handling Sewage Pumps



THE MYERS MW50 SERIES SEWAGE PUMPS PROVIDE BIG PERFORMANCE IN A SMALL PACKAGE.

The enclosed two-vane impeller provides the flow and head required for residential and light commercial sewage applications, and passes a full 2" diameter solid. The MW50 is constructed of only the highest quality corrosion resistant materials - cast iron, stainless steel and engineered thermoplastics - for many years of service in harsh sewage environment. The MW50 is available in manual models for use with external controls or automatic models with piggy-back mechanical float. For more information, call your Myers distributor or the Myers, Ashland, Ohio, sales office at 419-289-1144.

ADVANTAGES BY DESIGN TWO VANE IMPELLER DESIGN PROVIDES MAXIMUM EFFICIENCY

- Enclosed design for high efficiency pumping.
- Eliminates possibility of jamming between impeller and volute.
- Passes a full 2 inch solid.
- Original performance can be restored if wear occurs by replacing volute seal ring.

DURABLE MOTOR WILL DELIVER MANY YEARS OF RELIABLE SERVICE

- Oil-filled motor for maximum heat dissipation and continuous bearing lubrication.
- Permanent split capacitor motor eliminates starting switches and relays which are prone to fail.

THE MW50 IS DESIGNED FOR MANY YEARS OF MAINTENANCE FREE OPERATION

- Positive sealing, quick connect power cord and piggyback float switch make replacement simple if service is ever necessary.
- Field tested, wide angle, mercury-free mechanical float switch provides maximum draw down. (Automatic models only.)

PRODUCT CAPABILITIES

Capacities To	135 GPM	510 LPM
Heads To	27 ft.	8.23 m
Max. Spherical Solids	2 in.	50.6 mm
Liquids Handling	domestic sewage & drain water	
Intermittent Liquid Temp.	up to 140° F	up to 60° C
Motor Electrical Data	½ hp, 1625 rpm PSC (1 Ph), oil-filled 115 volts, 9.0 amps, 1 ph, 60 Hz 230 volts, 4.5 amps, 1 ph, 60 Hz	
Third Party Approvals	UL, CSA	
Acceptable pH Range	5-9	
Specific Gravity	.9-1.1	
Viscosity	28-35 SSU	
Discharge, NPT	2 in.	50.8 mm
Min. Sump Dia. Simplex Duplex	24 in. 36 in.	61cm 91.4 cm

Construction Materials

Motor Housing	cast iron, Class 30, ASTM A48
Impeller	enclosed, engineered thermoplastic
Impeller Wear Ring	304 SST
Volute	cast iron, Class 30, ASTM A48
Volute Sealing Ring	Buna-N
Power Cord	20 ft. 16/3 SJTW/SJTW-A
Mechanical Shaft Seal	carbon & ceramic
Fasteners	300 Series SST

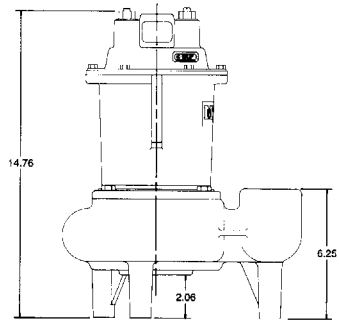
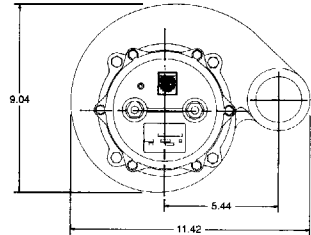
WHERE INNOVATION MEETS TRADITION

Myers

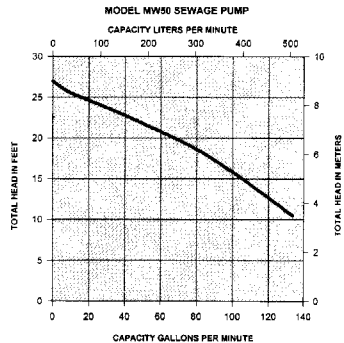
MW50 SERIES

½ Horsepower
2" Solids Handling Sewage Pumps

DIMENSIONS



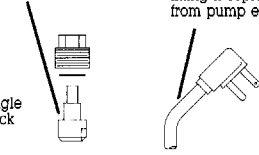
PERFORMANCE CURVE



PLUG
Provides watertight seal.

POWER CORD
Quick-connect watertight fitting is replaceable from pump exterior

MECHANICAL FLOAT SWITCH
Mercury-free, 90° angle operation. (Piggyback models only)



THRUST WASHER, SLEEVE BEARINGS
Enhance smooth operation and extend pump life.

ROTARY SHAFT SEAL
Carbon, ceramic faces.

HIGH EFFICIENCY VOLUTE
Passes 2" spherical solids. 2" NPT Discharge.

MOTOR HOUSING
Cast iron for efficient heat transfer.

OVERLOAD SWITCH
Built-in to protect against overload conditions.

½ HP MOTOR
1625 rpm, 60 Hz, 115 or 230V, PSC single phase. Oil-cooled and lubricated.

ENCLOSED TWO VANE IMPELLER
High efficiency, passes 2" spherical solids with stainless steel wear ring. Engineered thermoplastic. Optional bronze construction available.

VOLUTE/IMPELLER SEAL RING
Maintains high efficiency and reduces recirculation, replaceable.