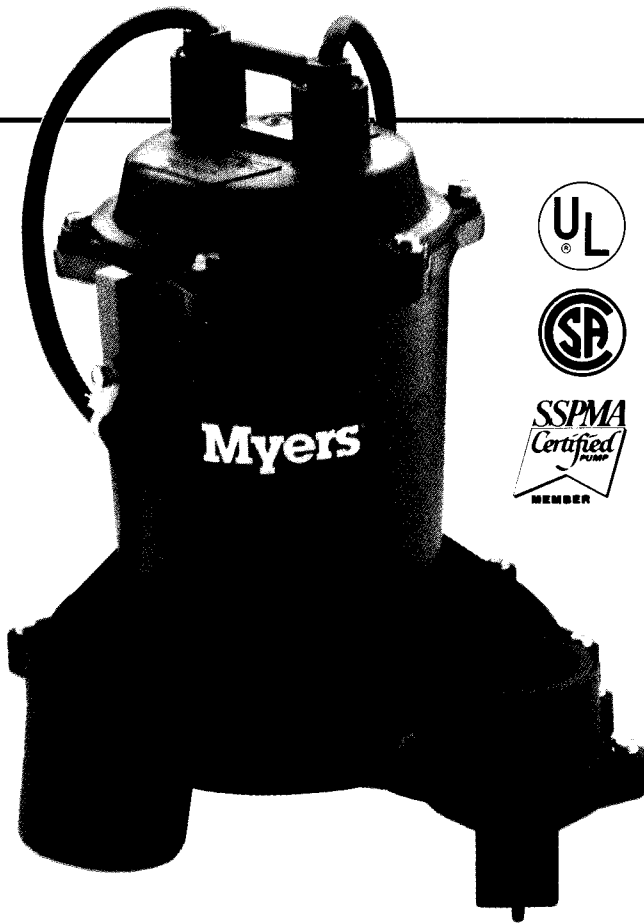


ME40 SERIES

4/10 HP Effluent
and Drain Water Pumps



THE MYERS ME40 SERIES EFFLUENT PUMPS ARE ONE OF THE MOST EFFICIENT 4/10 HP EFFLUENT PUMPS ON THE MARKET TODAY. The enclosed two vane impeller provides the flow and head required for today's dosing systems and the many tough drainage applications. The ME40 is constructed of only the highest quality corrosion resistant materials — like cast iron, stainless steel and thermoplastics — for many years of service in the harsh effluent environment. The ME40 is available in automatic models with built-in mechanical float switch or manual models for use with external controls for precise dosing. For more information, call your Myers distributor today or the Myers Ashland, Ohio sales office at 419/289-1144.

ADVANTAGES BY DESIGN

TWO VANE IMPELLER DESIGN PROVIDES MAXIMUM DOSING EFFICIENCY

- Enclosed design for high efficiency pumping.
- Eliminates possibility of jamming between impeller and volute.
- Passes a full 3/4 inch solid.
- Original performance can be restored if wear occurs by replacing volute seal ring.

DURABLE MOTOR WILL DELIVER MANY YEARS OF RELIABLE SERVICE

- Oil-filled motor for maximum heat dissipation and continuous bearing lubrication.
- Overload protected, shaded pole motor eliminates starting switches and relays which are prone to fail.

THE ME40 IS DESIGNED FOR MANY YEARS OF MAINTENANCE FREE OPERATION

- Positive sealing, quick connect float and switch cords make replacement simple if service is ever necessary.
- Field tested, wide angle, mercury-free mechanical float switch provides maximum draw down. (Automatic models only.)

PRODUCT CAPABILITIES

Capacities To	60 GPM	227 LPM
Heads To	32 ft.	9.75 m
Max. Spherical Solids	3/4 in.	19 mm
Liquids Handling	domestic effluent & drain water	
Intermittent Liquid Temp.	up to 140° F	up to 60° C
Motor Electrical Data	4/10 hp, 1600 rpm shaded pole, oil-filled 115 volts, 11.5 amps, 1 ph, 60 Hz 230 volts, 5.8 amps, 1 ph, 60 Hz	
Third Party Approvals	UL and CSA	
Acceptable pH Range	6-9	
Specific Gravity	.9-1.1	
Viscosity	28-35 SSU	
Discharge, NPT	1 1/2 in.	38.1 mm
Min. Sump Dia. Simplex	24 in.	61 cm
Duplex	36 in.	91.4 cm

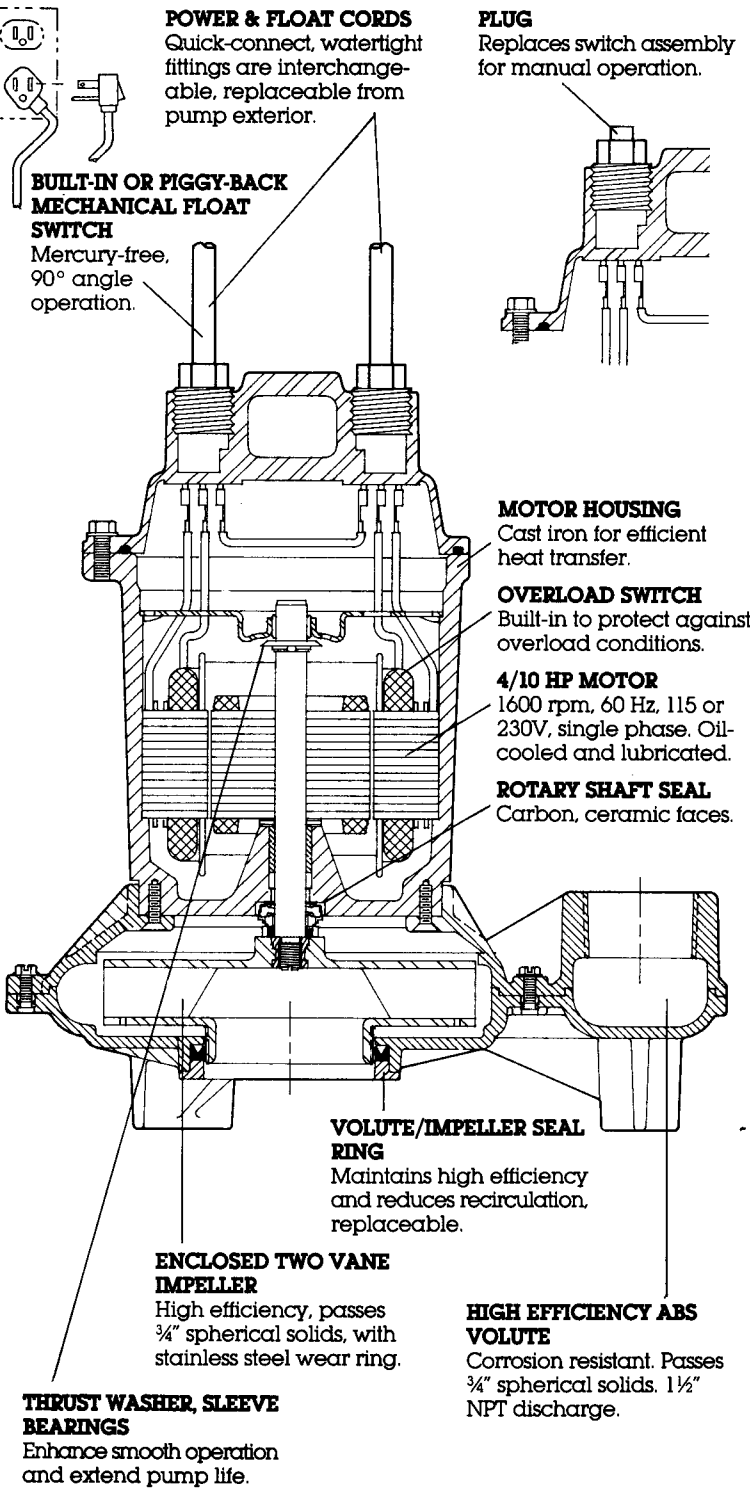
Construction Materials	
Motor Housing	cast iron, Class 30, ASTM A48-76
Impeller	enclosed, engineered thermoplastic
Impeller Wear Ring	304 SST
Volute	thermoplastic
Volute Sealing Ring	Buna-N
Power Cord	10 or 20 ft. 16/3 SJTW/SJTW-A
Mechanical Shaft Seals	carbon & ceramic
Fasteners	300 Series SST

WHERE INNOVATION MEETS TRADITION

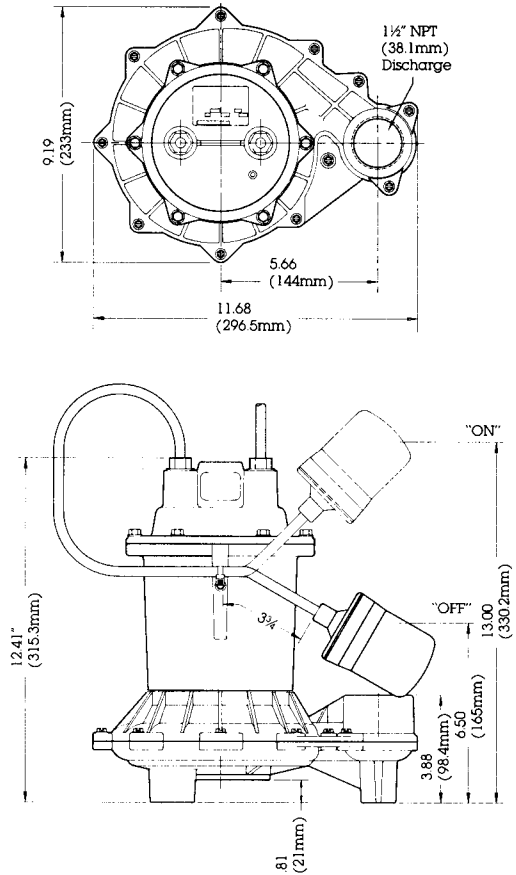
Myers®

ME40 SERIES

4/10 HP Effluent
and Drain Water Pumps



DIMENSIONS



PERFORMANCE CURVE

